



# DTEN Vue Pro

## Brightness adjustment

August 2023

# Table of Contents

- Table of Contents..... 2
- Overview..... 4
- Supporting Product..... 4
- Designed Use Case..... 4
- Setup Instructions..... 4
  - Prerequisites..... 4
  - Step-by-step instructions..... 4
- Known Issues..... 5

# Overview

DTEN Vue Pro now supports brightness adjustment on all four cameras. This allows users in a meeting room to adjust the brightness of images from different cameras to achieve consistent lighting.

## Supporting Product

- DTEN D7X 55 & 75 Windows

## Designed Use Case

As an IT administrator, IT wants to be able to adjust the brightness of the four cameras of Vue Pro so that there are no significant differences in brightness when displaying the images from different cameras in a meeting.

## Setup Instructions

### Prerequisites

- DTEN minimum version: 3.5.0
- Zoom Room minimum version: 5.13
- Account owner, admin, or role with device management setting permissions to Zoom Rooms.

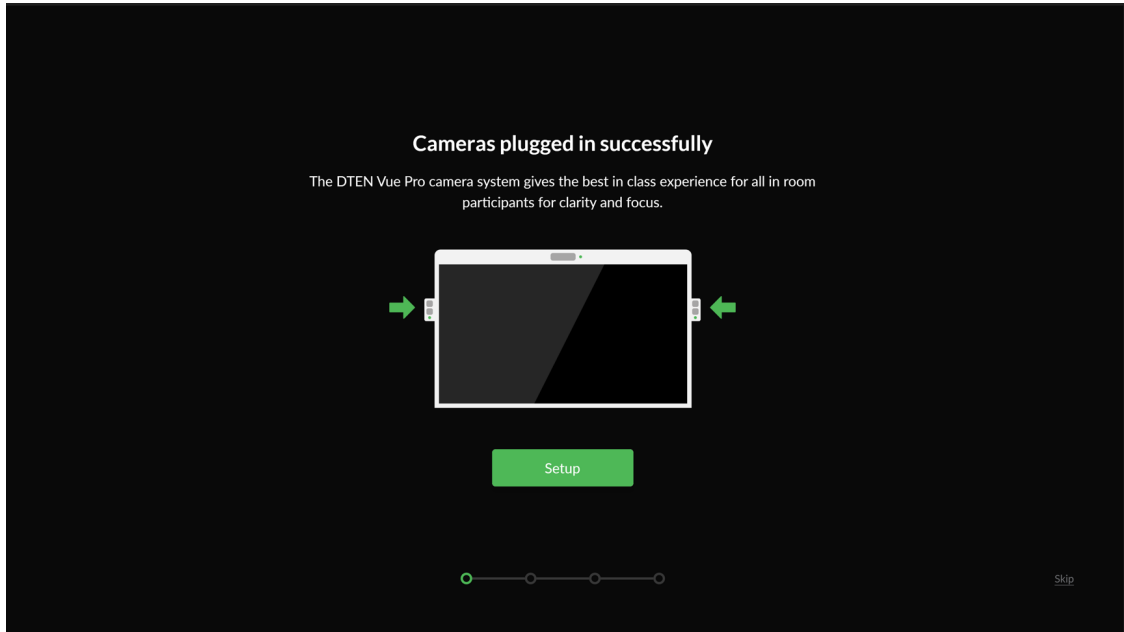
## Step-by-step instructions

### Set up your Vue Pro cameras on your D7X Windows device

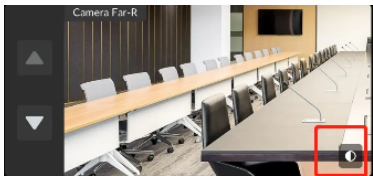
1. Insert Vue Pro while the device is on the Zoom Room homepage.
  - a. If you have set up Vue Pro cameras and want to adjust the brightness settings, see [Vue Pro installed on a D7X Windows device](#) for the instructions.
2. After installing the Vue Pro cameras, wait approximately 10 seconds for the Vue Pro setup interface to appear on your D7X Windows screen.



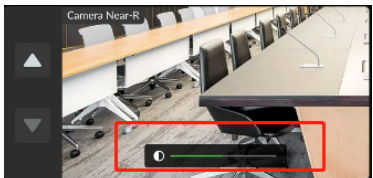
3. Tap the **Setup** button to continue the Vue Pro camera setup process.



4. Tap on the **brightness icon** located in the lower right corner of the camera view.



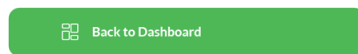
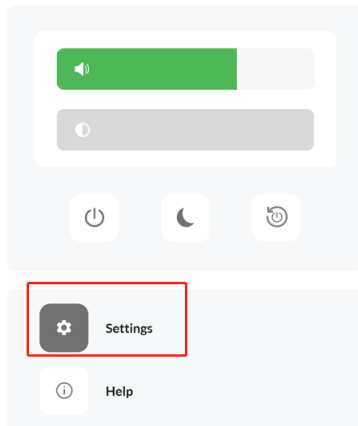
- 5.
6. Drag the **brightness slider** to adjust the brightness level to your preference.



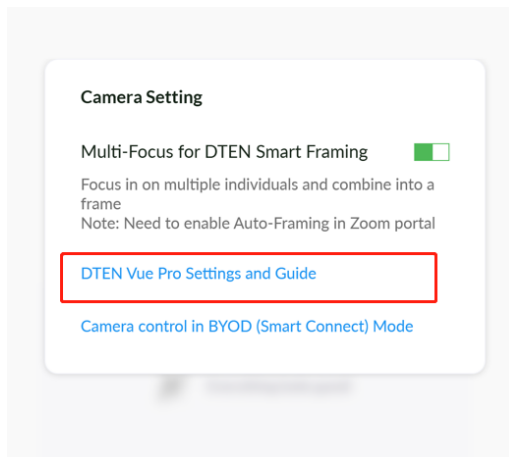
7. Repeat Step 4 and Step 5 to adjust the brightness for each of your Vue Pro cameras.
8. Tap **Next** to finish the initial setup.

## Already installed Vue Pro Cameras on a D7X Windows device

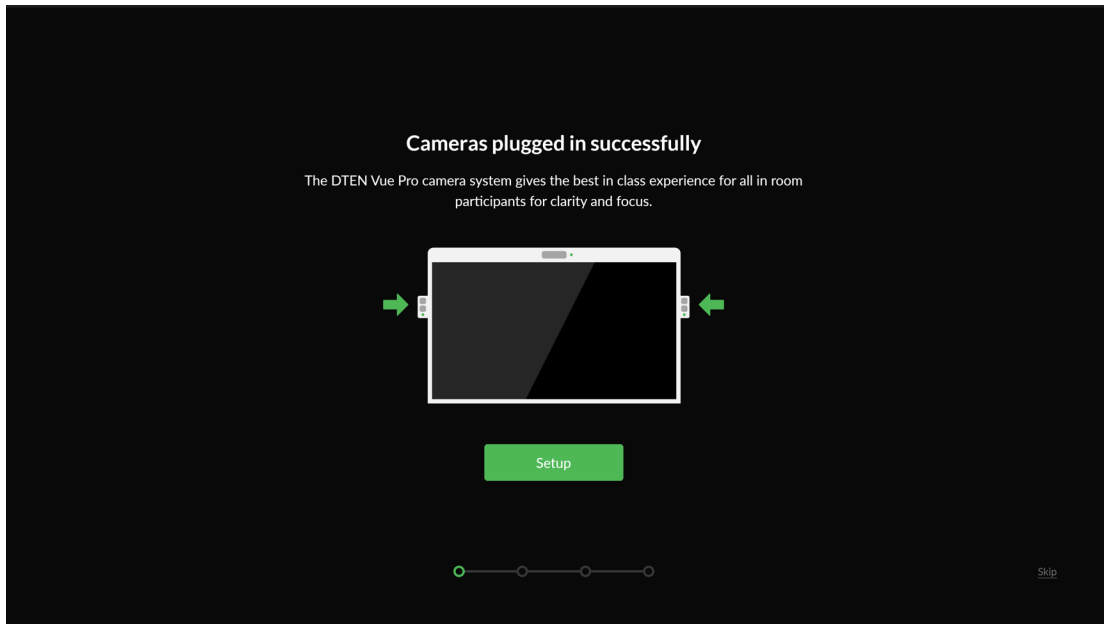
1. Go to the DTEN Dashboard by selecting the menu button on the back of the device.
2. Tap on **Settings**.



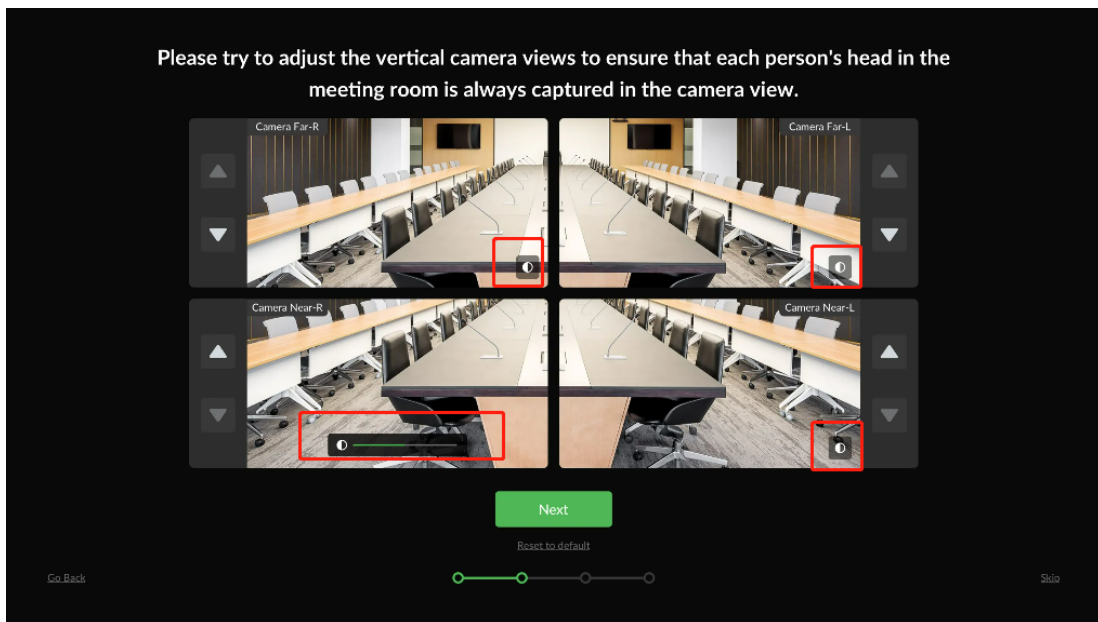
3. Select the **DTEN Vue Pro Settings and Guide** to configure your Vue Pro camera settings.



4. Tap the **Setup** button to continue the Vue Pro camera setup process.



5. Tap on the **brightness icon** located in the lower right corner of the camera view.
6. Drag the brightness slider to adjust the brightness level to your preference.



7. Repeat Step 4 and Step 5 to adjust the brightness for each of your Vue Pro cameras.
8. Tap **Next** to finish the initial setup.

## Known Issues

None

