

Smart Gallery (Multi-stream View)

Be Present
Anywhere with
DTEN & Zoom

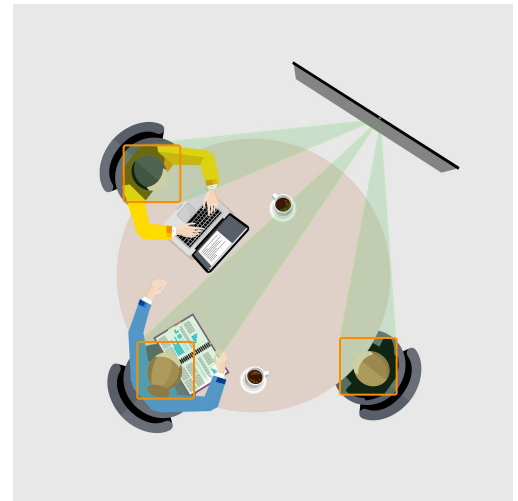


SOLUTION OVERVIEW

Inclusion, Engagement, and Equity in the Hybrid Office

While staying connected is at the center of the new hybrid office, combining in-person meetings with remote team members can sometimes leave people feeling more challenged to participate and contribute in meetings.

How can we keep remote and in-room participants feeling connected to each other in hybrid work environments? Technology that enables everyone to be seen and heard clearly is required. Beyond this, solutions need to create equal opportunities for remote and in-room participants to participate and engage with each other and content.



Get a Different View

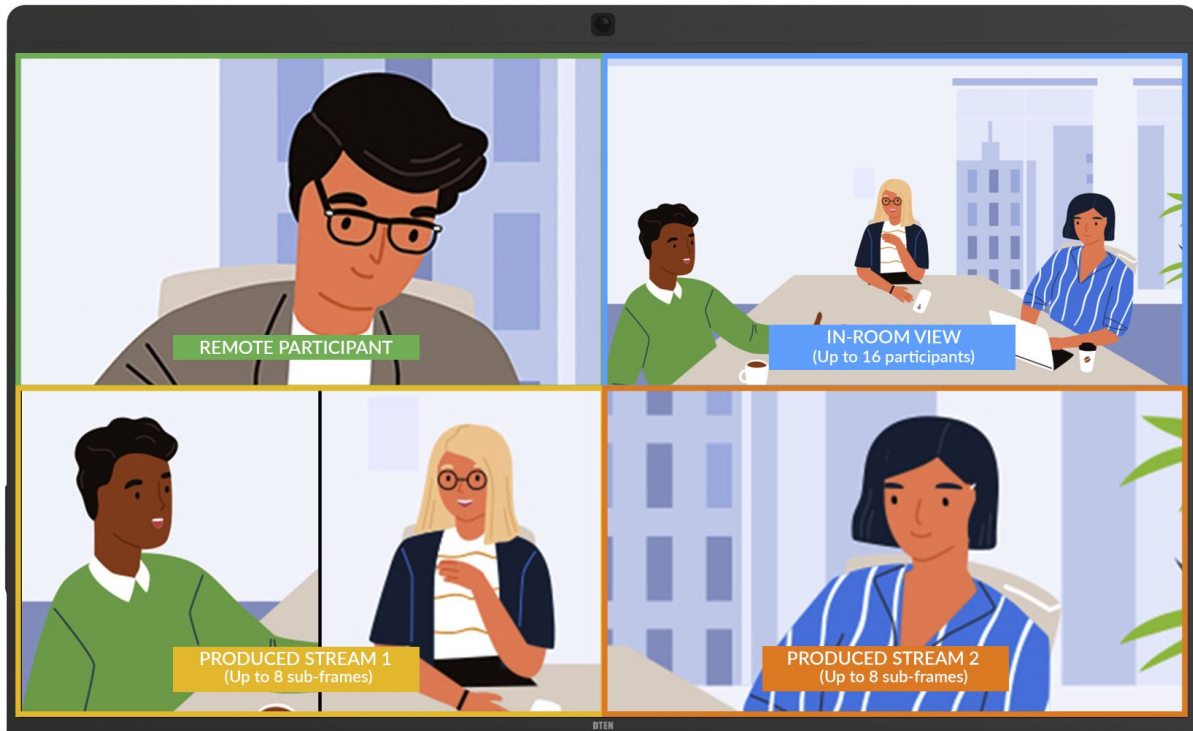
DTEN and Zoom have worked together to develop **Smart Gallery for Windows for DTEN D7**. This new feature divides in-meeting participants into individual video frames, tailoring focus and composition into equal parts so everyone has equal presence in every meeting.

It lets team members see each other with each at the center of their own video frames, allowing them to focus on what matters in meetings - people and content. Smart Gallery on DTEN solutions ensures equal focus for every meeting participant, regardless of physical proximity to the DTEN smart camera array.

**More Immersive
Meeting Experiences**

**Equal Presence and
Inclusion**

AI Powered



Rely on a simplified, professional meeting experience with Smart Gallery on the DTEN D7.

More Immersive Meeting Experiences with Touch Collaboration

- As each participant is equally prominent on screen, nuanced facial cues, gestures and body language are more clearly conveyed, resulting in more natural and immersive conversations.
- Easy access to content sharing, whiteboarding and annotation result in more collaboration and productivity.

Equal Presence

- Remote workers will gain a better sense of the in-room experience as Smart Gallery follows in-room participants who leave and enter the room, capturing the flow of people, regardless of their physical proximity to the DTEN D7 or location in the meeting room.

AI Powered

- Once enabled, each in-person and remote meeting participant is automatically detected by AI camera technology and assigned to their own perfectly composed frame.
- DTEN All-in-One collaboration solutions use clever AI technology to deliver a professional video meeting experience with life-like video, crystal-clear audio and intuitive touch collaboration.

Smart Gallery

- Available on DTEN D7 55", 75", Dual 55" and Dual 75"
- Employs proprietary AI technology to optimize focus and composition for up to 16 participants, split between 3 windows (room view, stream 1 and stream 2)
- Dynamically adjusts to frame meeting participants that may be sitting, standing or actively moving about the room
- Works behind the scenes without requiring any manual adjustment or settings
- DTEN Smart Gallery can be enabled by toggling the Multi-Stream Camera Control Mode available in Zoom Device Management settings (*requires Zoom Rooms v 5.8.0 or later*)

Available Today on DTEN D7 Version 5.9.3